

WADE™
ANTENNA

ANTENNAS, TOWERS AND MOUNTING EQUIPMENT

Above and beyond.™

Agenda

- About Us
 - Markets We Serve
 - Towers Overview
 - DMX Self-Supporting Towers
 - DMXB Bracketed Towers
 - Golden Nugget Bracketed Towers
 - Commercial Guyed Towers
 - Lighting Towers
 - Pop-Up Telescoping Masts
- Tripods
 - Wall Mounts & Masting
 - Heavy Duty Non-Penetrating Roof Mount
 - Non-Penetrating Roof Mounts
 - Custom Mounts
 - WiFi
 - CATV
 - Web Site Demonstration
 - Questions

About Us

Wade Antenna manufactures secure and reliable communication solutions for organizations worldwide that value security and reliability.

In 1989 WADE Antenna Ltd. is established and purchases the rights to a respected antenna product line created 55 years prior. We strengthened our market position, distribution channels, and customer service by acquiring Delhi Antenna products in 2001, which included home antennas, towers and mounting equipment.

With progressive leadership that emphasizes customer service through sales, marketing, research and innovation, WADE and TACO deliver unrivalled service and satisfaction alongside leading edge technology.

Markets We Serve

Towers and Mounts

- Off-air TV reception
- Rural Broadband wireless networks
- Oil & gas
- Security
- Mining
- Construction sites and parks
- Education
- Off Grid power (Res, Ent, Comm.)



Markets We Serve

Antennas

- Rural broadband wireless connectivity
- Mining
- Transportation
- Oil & gas
- Construction (Above and Underground)
- Cable TV & Broadcast
- Education

*We can also provide custom solutions
for unique wireless markets*



Towers and Mounts

Overview

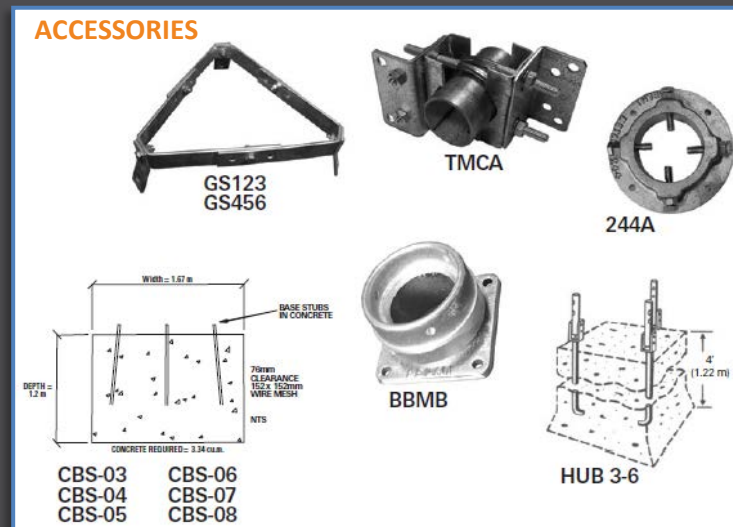
- Leading manufacturer of high quality mounting equipment
- Installed across Canada, the United States and worldwide for over 50 years
- Originally designed for TV Antenna applications
- Mounting products include wall mounts, pop-ups, flat roof mounts and tripods.
- Free standing, bracketed, and guyed tower models available
- Equipment is now most commonly used for rural SCADA, WiMax, Wi-Fi, 802.11 wireless internet, and indoor/outdoor LTE applications



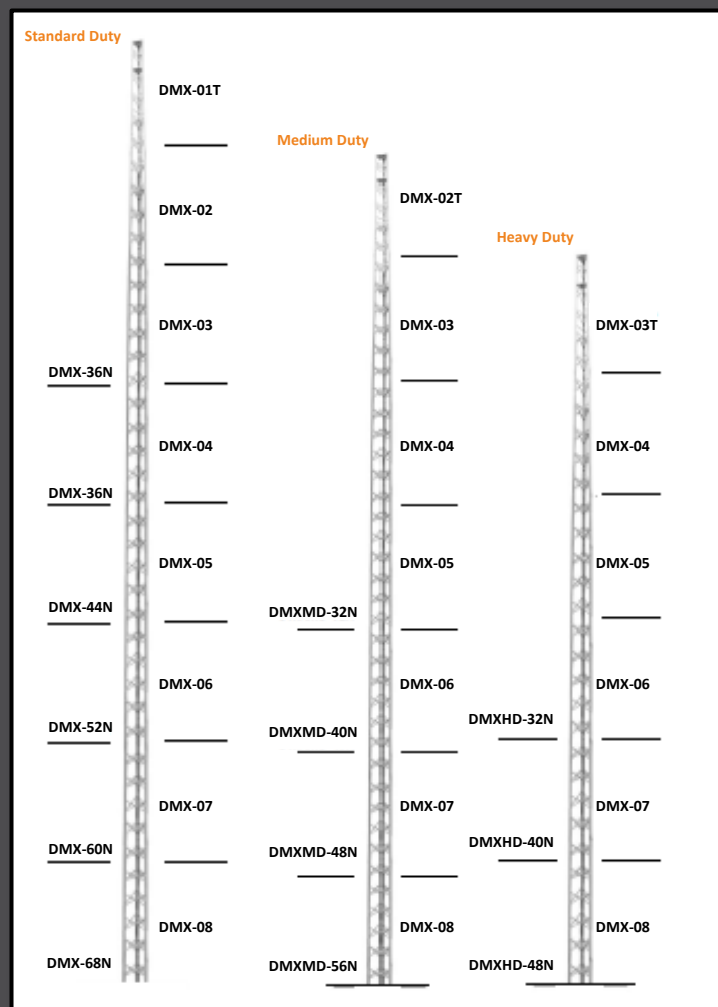
DMX Self-Supporting Towers

- Free-standing installation
- High strength galvanized steel construction
- Sections 8-5 are 12 ga. Sections 4-1 are 16 ga.
- Standard, medium & heavy duty models supporting 3, 6 and 9 square feet of wind area
- Eight foot sections, from 28 to 68 feet
- Attractive tapered design
- Hardware included
- Compact shipping package

[Watch our DMX Tower Video](#)



DMX Self-Supporting Towers



STANDARD TOWER PACKAGES

DMX towers are packaged complete with CBS concrete base stubs, DM mast, top plate, rotor plate, TMCA clamp assembly and all necessary hardware. Height includes mast.

MEDIUM AND HEAVY DUTY TOWER PACKAGES

DMX Medium and Heavy Duty towers are packaged complete with CBS concrete base stubs, top plate, rotor plate, 244A mast clamp assembly and all necessary hardware.

TOWER MODELS

Standard Duty

DMX-28N 28' (8.53 m)
DMX-36N 36' (10.97 m)
DMX-44N 44' (13.41 m)
DMX-52N 52' (15.85 m)
DMX-60N 60' (18.29 m)
DMX-68N 68' (20.73 m)

Medium Duty

DMXMD-32N 32' (9.75 m)
DMXMD-40N 40' (12.19 m)
DMXMD-48N 48' (14.63 m)
DMXMD-56N 56' (17.07 m)

Heavy Duty

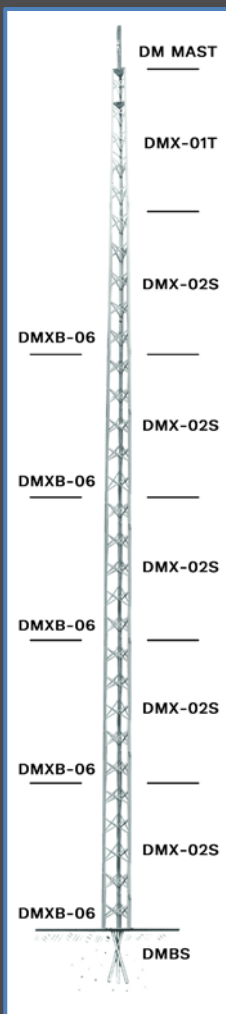
DMXHD-32N 32' (9.75 m)
DMXHD-40N 40' (12.19 m)
DMXHD-48N 48' (14.63 m)

DMX Bracketed Towers

- Complete tower package, no concrete required
- High strength galvanized steel construction
- Universal house bracket
- Designed to support equipment up to 3 Sq.ft (0.28M2) projected wind area, mounted not more than 2.5 sections above house bracket

Applications

- Industrial/commercial communications
- Video surveillance, off-air TV antennas, rural wireless internet



TOP/ROTOR



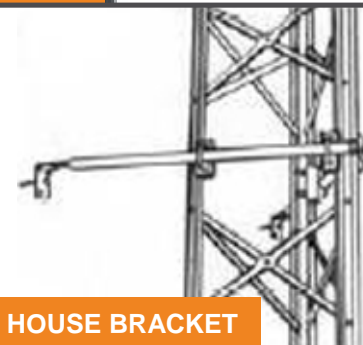
MAST CLAMPS



MAST



BASE PLATE

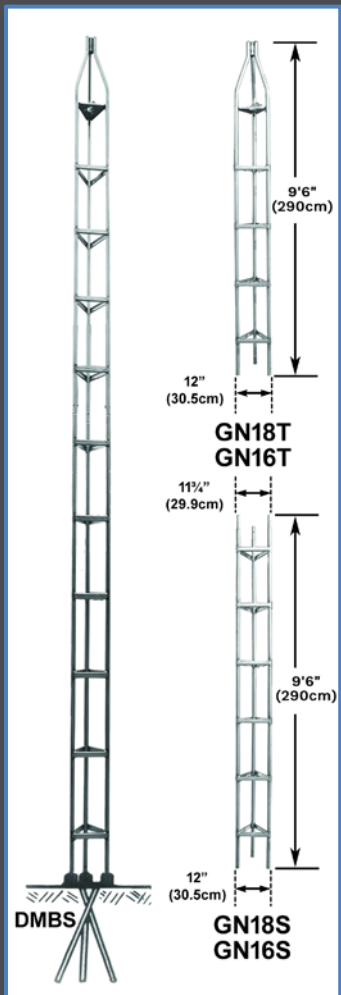


HOUSE BRACKET



TOP SECTION

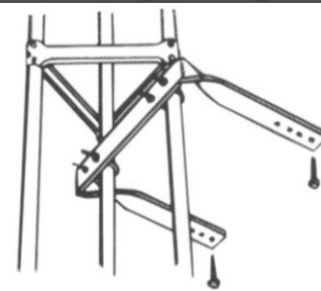
Golden Nugget Bracketed Towers



- 10 foot tubular sections with precision swaged legs for perfect fit
- Galvanized steel legs and braces "Everdur" welded for high strength
- Sleeve bearing for masts up to 1.66" (3.8 cm) diameter
- Rotor plate for masting included
- Designed to support equipment up to 3 ft² (0.28 m²) projected wind area, mounted not more than 2.5 sections above house bracket.
- Sections are subjected to pressure testing to ensure all weld points pass the minimum strength requirements



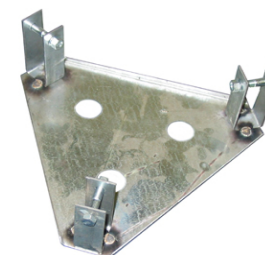
UNIVERSAL HOUSE BRACKET



'U' HOUSE BRACKET



DRIVE STAKES



BASE PLATE



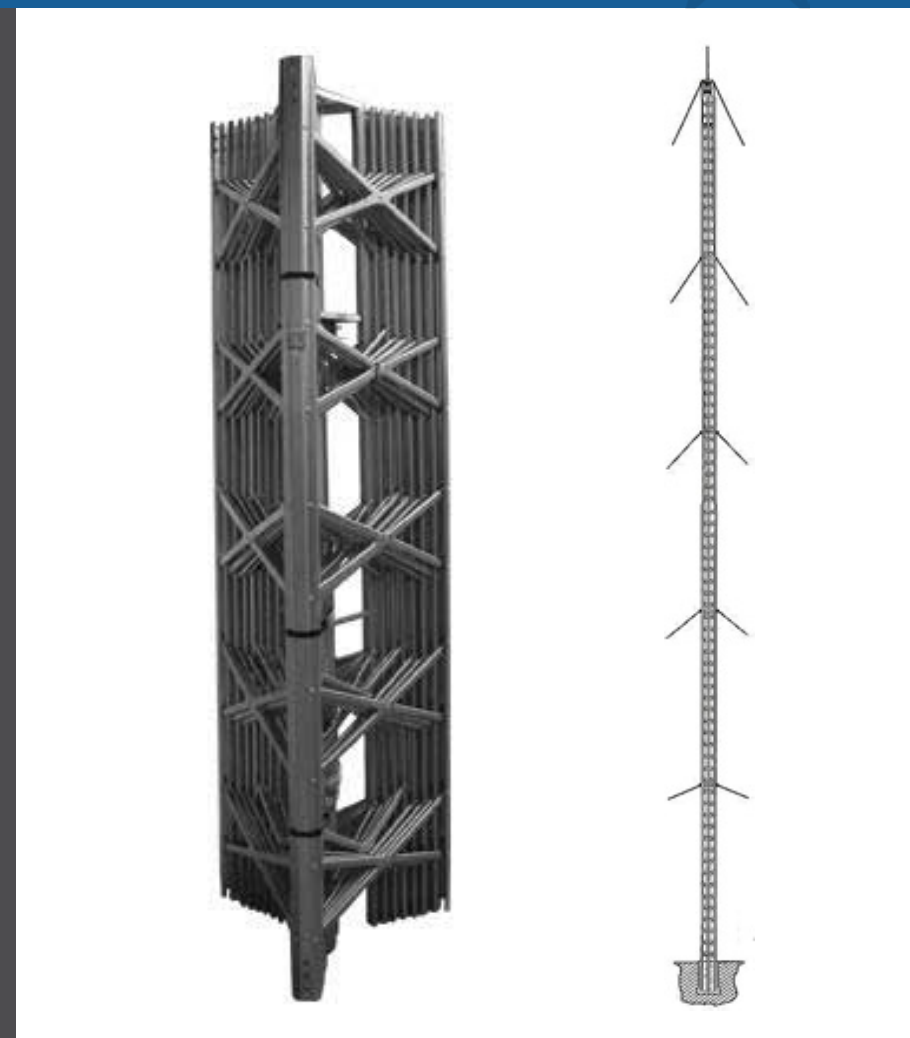
HINGE-UP BASE

Commercial Guyed Towers

- 12 models available from 62 ft. (8 sections) up to 147 ft. (19 sections) plus mast.
- Larger top section allows for greater loading
- Designed to support a net antenna weight of up to 80 lbs. with a horizontal wind load of up to 300 lbs. plus rotor and 2" O.D. x 10 ft. mast.
- Instructions supplied for 30 degree guying with ground anchors 120 degrees apart, $\frac{1}{2}$ tower height from base.

Applications

Industrial/Commercial communications, rural internet connectivity, video surveillance, Site lighting

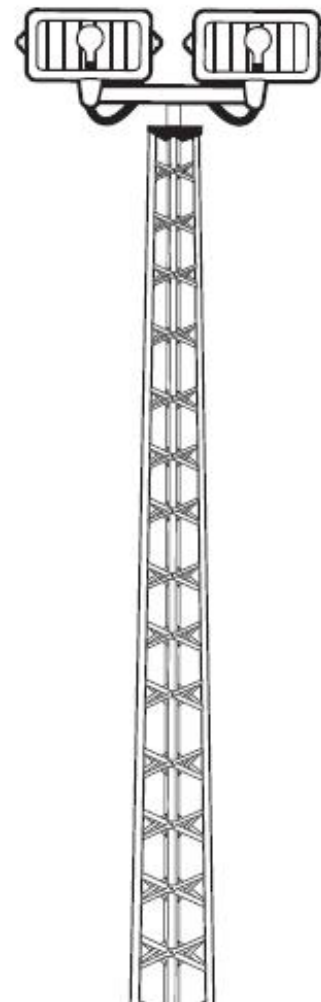


Lighting Towers

- Top section includes 2 heavy gauge galvanized plates, each with a heavy duty cast aluminum mast clamp that will accept masts up to 2 ½" O.D
- 8 ft. nested sections for easy shipping and handling
- Climb shields available

Four Series available:

Model	Series No.	Max. Height	Max. Load
LT	1	64'	3 ft ² projected area – 60 lbs of weight
LT	2	56'	6 ft ² projected area – 120 lbs of weight
LT	3	48'	9 ft ² projected area – 180 lbs of weight
LT	4	40'	12 ft ² projected area – 240 lbs of weight



Pop-Up Telescoping Masts

Pop-Up telescoping masts to choose from:

Model 15A 15 Foot Telescoping Mast

Model 20A 20 Foot Telescoping Mast

Model 30A 30 Foot Telescoping Mast

Model 40A 40 Foot Telescoping Mast

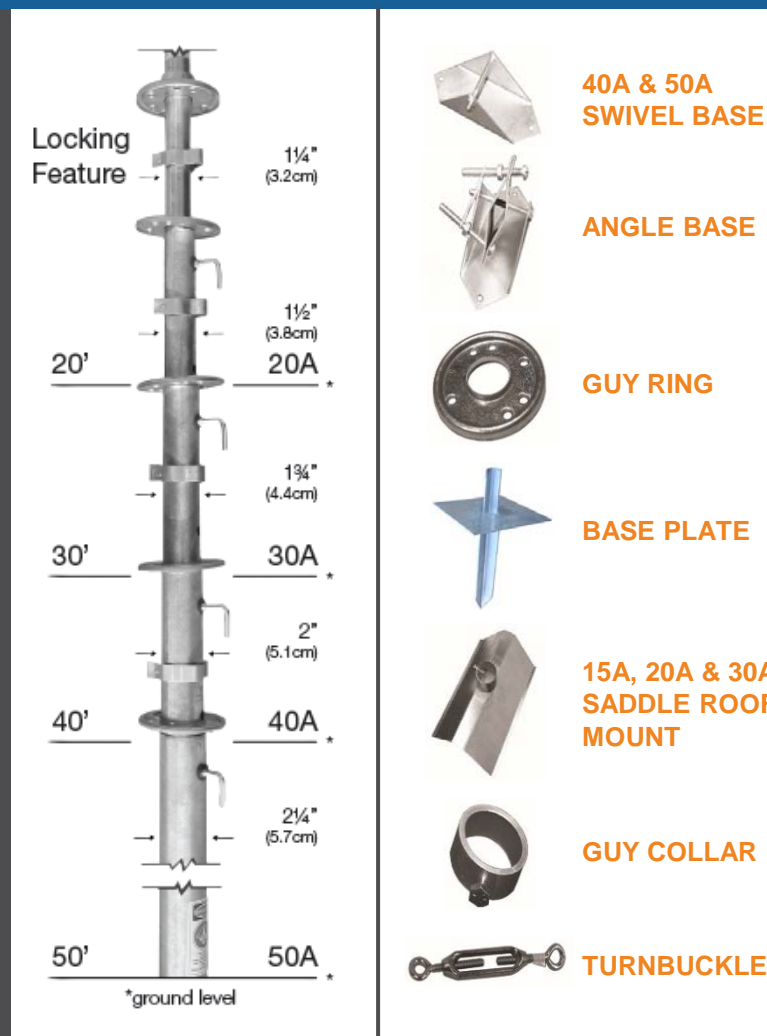
Model 50A 50 Foot Telescoping Mast

Features

- High strength galvanized steel tubing
- Precision flared and swaged for smooth fit
- 16 gauge top section, balance 18 gauge
- Snap lock for easy installation
- Chafe resistant floating guy rings included
- Various bases available

Applications

Oil & gas, rural wireless, SCADA



Tripods

- Heavy duty construction
- 1 ¼" (3.18 cm) galvanized welded steel tubing
- Accepts up to 1 ¾" (4.4 cm) mast
- Installs on peaked or flat roof
- All models pre-assembled for quick and easy on-site installation
- TRM-3PN boxed for easy storage
- Roof sealing lag screws available



TR2-5 BIPOD (5' Mast included)



TRM-10L 10' TRIPOD



TRM-5N 5' TRIPOD



TRM-3PN 3' TRIPOD

Wall Mounts and Masting



MASTING (Our mast selection includes)

- 5, 8 & 10 foot lengths • 1.25 to 2 inch O.D. • 16 & 18 gauge



2157

- Adjusts from 5-7" • 1 3/4 Inch U-Bolt ID.



BTA UNIVERSAL WALL MOUNTS

- BTA – 23" • BTA-L – 29" • BTA-38 – 38"



2118

- 18" Arms • 1 3/4" U-Bolt ID

2124

- 24" Arms • 1.66 Inch U-Bolt ID



CMY7-18

- 18" Strap • 1 3/4 Inch U-Bolt ID

Heavy-Duty Roof Mount



Features

RUGGED CONSTRUCTION

- Hot dip galvanized, all steel construction conforming to CSA G40.21
- 93" x 80.6" base for heavy duty support
- Wind loading available

FLEXIBLE AND ADAPTABLE

- 4 different mast size options: 2.88", 3.50", 4.00" & 4.50" OD
- 1 mount with 4 different configurations
- Antennas may be mounted to mast height of 10 feet
- Designed for minimal mast deflection acceptable for 80 GHz, max. area of .75ft²



Heavy-Duty Roof Mount



Benefits

EASY TO INSTALL

- Simple knock-down assembly allows for easier portability to installation location
- Uses standard 24" x 24" x 2" patio stones
- No roof drilling or penetration required
- Mast & required neoprene mat not included

APPLICATIONS

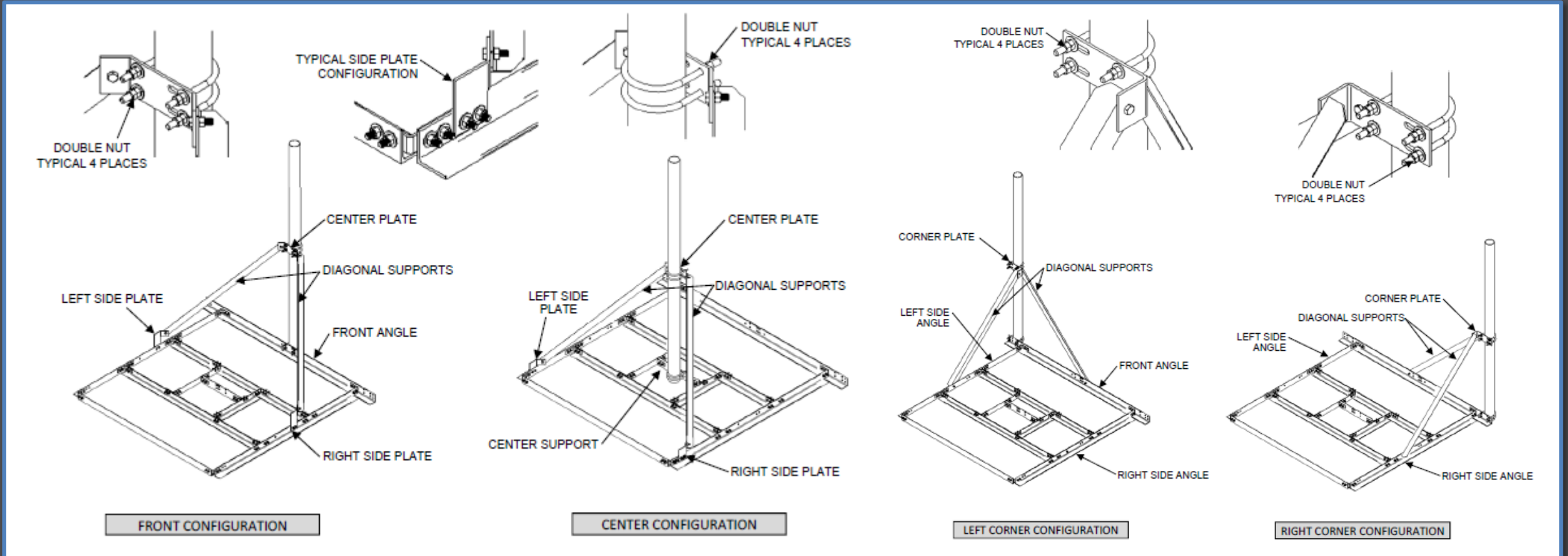
- Cellular/PCS, microwave, paging, satellite, 2-way radio
- Economical point-to-point data network communication



Heavy-Duty Roof Mount



Configurations



NON-Penetrating Roof Mounts

Features

- 2 gauges of pre-galvanized steel frames
- Accepts our Wade Pop-up masts for added height (guying required)
- Stabilizing white mats available to protect the mounting surface

Benefits

- Rigid construction will withstand harsh elements
- No anchoring necessary
- Uses both cinder blocks & patio stones

Applications

- Inexpensive industrial, commercial & rural wireless communications
- Video surveillance

[Watch our NPRM Video](#)

HALF BASE MODELS

- Base size: 48" x 30"
- 2" OD mast included



NPRM-1/2-LD-3
(3' mast)



NPRM-1/2-LD-5
(5' mast)

FULL BASE MODELS

- Base size of 48" x 48"
- Accept up to 2 1/2" mast (mast not included)
- Minimum mast height of 54 inches
- 1 & 2 use 244A Mast Clamp
- 3 & 4 use U-Bolts
- 1 & 3, 16 Gauge Steel
- 2 & 4, 14 Gauge Steel
- Courier shippable



NPRM-1



NPRM-2



NPRM-3



NPRM-4

NON-Penetrating Roof Mounts



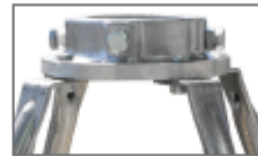
FULL BASE MODELS



NPRM-1
16 GAUGE STEEL



NPRM-2
14 GAUGE STEEL



The 1 & 2 share
top and base mast
clamp



NPRM-3
16 GAUGE STEEL



NPRM-4
14 GAUGE STEEL



The 3 & 4 share
top and base U-bolt
and bracket

All Full Base Models

- Base size: 48" x 48"
- Accept up to 2-1/2" mast
- Minimum mast height of 54"
- Courier shippable
- Mast not included

NPRM-2 Non-Penetrating Roof Mount

- Motorola Canopy Access Point for PtP application



Custom Brackets

Applications

- Utilities
- Municipalities
- Oil & gas
- NEMA enclosures
- Antenna mounting
- SCADA
- Hydro poles



I BRACKET (Heavy Wall Aluminum Bracket)



L BRACKET (Heavy Wall Hot Dipped Galvanized Steel Bracket)



Wi-Fi Antennas



Overview

- Niche wireless applications
- Broad customer base
- Antennas deployed around the globe
- Focus on superior, reliable products at a competitive price

Helical Antennas



Features

- 2.4 or 5.8 GHz
- Video
- Data transfer
- VoIP

Applications

- Wi-Fi
- ISM
- RFID
- Warehousing
- SubwayTunnels
- Elevator shafts
- Video surveillance
- Downtown corridors
- Parking lots
- Underground Mining



5 GHz Train Antenna



- Our BD-5.8-9 is a truly bi-directional antenna
- Currently used in VIA Rail's mobile mesh network
- Single RF input avoids the need for phase matched RF cables
- Aerodynamic fiberglass cover adds strength and durability



CATV Antennas



Model Types

- Log Periodic
- Helical
- Parabolic
- Yagi

Log Periodic Antennas



VHF Log Periodic for Channels 2 to 13 (54-216MHz)

- Rugged construction
- Excellent performance with reliable operation

UHF Log Periodic for Channels 14 to 69 (470 – 890MHz.)

- Provides optimum performance over the desired band
- Light weight, high quality antenna is small in size and big on performance



- Available in custom designed arrays to minimize signal interference
- Used by telecommunication and cable TV companies
- Models are end mounted

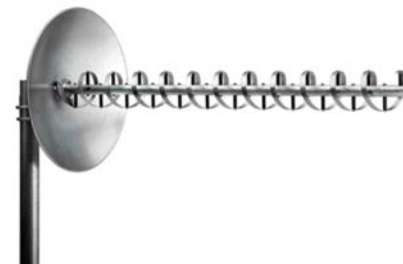
Helical Antennas



Features

- Broadband UHF
- channels 14 to 69 (470MHz.- 890MHz.)
- High gain
- Circular polarization
- Less tower load

WH14-69/S



WH14-69/HP



WH14-69/VP



WH14-69/QV

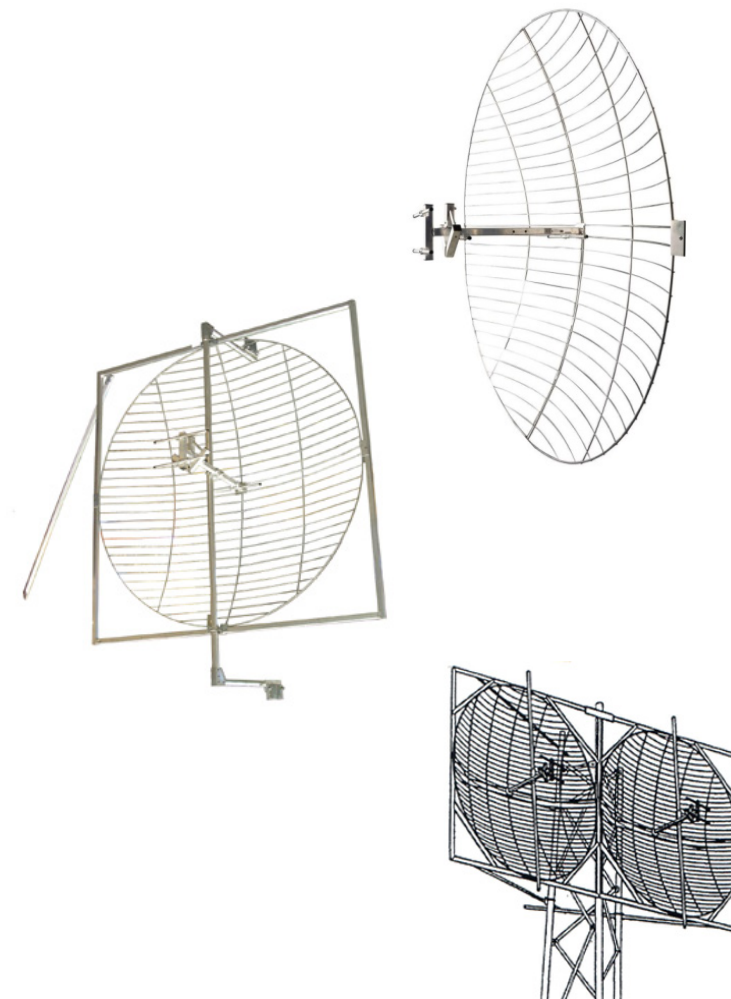


- Available in custom designed arrays to minimize signal interference

Parabolic Antennas



- Broadband UHF channels 14 to 69 (470MHz.- 890MHz.)
- High gain, light weight grid design
- Four models available (4', 6', 8', 2 x 8')



Yagi



- VHF & UHF cut-to-channel and broadband models
- Ideal for multiple dwelling units and small cable operators
- Economically priced
- Corrosion resistant materials
- Cantilever mounting kits available



WEB SITE DEMO

Distributor Support


- Print
- Email blasts
- Newsletter Promotions
- Supplier Events
- Incentives
- Point-of-Purchase displays
- Custom collateral

The collage displays four distinct marketing assets for Wade Antenna:

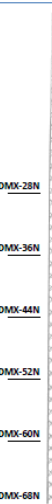
- Top Left:** A vertical blue brochure listing product categories: Towers and Mounts, CATV Receive Antennas, and Wireless Antennas, with the website wadeantenna.com at the bottom.
- Top Right:** A screenshot of the Wade Antenna website, featuring a navigation menu and a section titled 'Visit WADE's new website at wadeantenna.com'.
- Bottom Left:** A horizontal flyer for the 'Wade Antenna Summer Promo / July 1st to August 31, 2016'. It features three product bundles: 'DJI Phantom Quadcopter Drone with Camera and Controller - Ready-to-Fly!', 'GoPro HERO3 White Bundle - Be Prepared and Connected!', and 'Fujifilm Instax Mini 90 Camera Kit - Don't Miss a Moment!'. It also includes a 'Picture This.' headline and a 'Wade Antenna Summer Promo' section.
- Bottom Right:** A vertical technical specification sheet titled 'WADE ANTENNA DMX Standard, Medium and Heavy Duty Towers'. It lists various tower models (DMX-017 to DMX-608) and their dimensions, along with a list of features and a table of tower models.

Print

Specification sheets

**WADE
ANTENNA**

DMX Standard, Medium and Heavy Duty Towers



DMX-01T

DMX-02

DMX-03

DMX-28N

DMX-04

DMX-36N

DMX-05

DMX-44N

DMX-52N

DMX-60N

DMX-68N

Features

- Attractive tapered design.
- "X" brace with beaded channel leg
- Enhancements made to both leg profile and taper allow for easier installation and improved tower structure
- High strength galvanized steel construction
- Designed to withstand impact load of a climber in case of a fall in accordance with CSA-537-13. See installation instructions for more information.

Standard Tower Packages

DMX towers are packaged complete with CBS concrete base stubs, DM mast, top plate, rotor plate, TMCA clamp assembly and all necessary hardware. Height includes mast.

Medium and Heavy Duty Tower Packages

DMX Medium and Heavy Duty towers are packaged complete with CBS concrete base stubs, top plate, rotor plate, 244A mast clamp assembly and all necessary hardware.

Tower Models

DMX-28N 28' (8.53 m)	DMXMD-32N 32' (9.75 m)
DMX-36N 36' (10.97 m)	DMXMD-40N 40' (12.19 m)
DMX-44N 44' (13.41 m)	DMXMD-48N 48' (14.63 m)
DMX-52N 52' (15.85 m)	DMXMD-56N 56' (17.07 m)
DMX-60N 60' (18.29 m)	DMXMD-64N 64' (19.51 m)
DMX-68N 68' (20.73 m)	DMXMD-72N 72' (21.95 m)

Note: A concrete base is required. See installation instructions for more information.

YOUR LOGO


Phone: 800.999.9999
YOUR STREET
CITY STATE 99999
USA

WADE ANTENNA'S ONGOING POLICY OF CONTINUING DEVELOPMENT MAY RESULT IN SPECIFICATION CHANGES TO ITS PRODUCTS

WADE Antenna Inc.
29 Sharp Road
Bramford, Ontario, N3T 3L8 Canada
Tel: 513.736.7157
Fax: 513.736.5026

(800) 463-1607
sales@wadeantenna.com
www.wadeantenna.com
wadeusa.ca

Brochures

**WADE
ANTENNA**

Towers and Mounts

CATV Receive Antennas

Wireless Antennas

Towers & Mounts

WADE Antenna is a leader in antenna tower manufacturing. We have a vast selection of styles, sizes and accessories to meet any installation challenge.

Towers include: DMX self-supporting and bracketed, GN bracketed tubular, pop-up, guyed telescoping masts, commercial guyed, and lighting.

Accessories include: non-penetrating roof mounts, tripods, wall mounts and masts.

CATV Receive Antennas

LOG and YAGI Periodic Antennas

WADE Antenna's J-Series system antennas are designed for commercial and industrial master antenna installations. Their heavy-duty construction ensures reliability under severe climatic conditions, providing a durable, trouble-free operation. All antennas are available with the exclusive WADE Antenna Cantilever Mount.

Helical Antennas

WADE Antenna's helical antennas are circularly polarized for CATV Off-Air reception, and are available as a single antenna or a customized antenna array. They have superior performance and longevity even when exposed to the most extreme weather conditions.

UHF Parabolic Antennas

WADE Antenna's UHF parabolic receive antennas cover the entire UHF-TV spectrum. The versatility of these antennas allow the CATV system operator to solve difficult reception problems by using them singly or in an array to attain required gain or beam width.

Wireless

WADE Antenna offers a variety of solutions for wireless antennas. These applications include mining, trains and multi-point network base stations. In addition, WADE Antenna has accessories, power dividers, lightning arrestors, and cabling.

MIMO

WIFI

DAS

LTE


YOUR LOGO

YOUR COMPANY NAME
YOUR STREET
CITY STATE 99999
USA

TOLL FREE ORDER LINE: 800.999.9999
EMAIL: john@youremail.com
WEBSITE: YOUR WEB SITE

wadeantenna.com

Tabletop displays

**WADE
ANTENNA**

Wade Antenna goes above and beyond.

Towers and Mounts

CATV Receive Antennas

Wireless Antennas

Towers and Mounts

WADE Antenna is a leader in antenna tower manufacturing. We have a vast selection of styles, sizes and accessories to meet any installation challenge.

Towers include: DMX self-supporting and bracketed, GN bracketed tubular, commercial guyed, and lighting.

Mounting Equipment includes: non-penetrating roof mounts, tripods, wall mounts and masts.

CATV Receive Antennas

LOG and YAGI Periodic Antennas

WADE Antenna's J-Series system antennas are designed for commercial and industrial master antenna installations. Their heavy-duty construction ensures reliability under severe climatic conditions, providing a durable, trouble-free operation. All antennas are available with the exclusive WADE Antenna Cantilever Mount.

Helical Antennas

WADE Antenna's helical antennas are circularly polarized for CATV Off-Air reception, and are available as a single antenna or a customized antenna array. They have superior performance and longevity even when exposed to the most extreme weather conditions.

UHF Parabolic Antennas

WADE Antenna's UHF parabolic receive antennas cover the entire UHF-TV spectrum. The versatility of these antennas allow the CATV system operator to solve difficult reception problems by using them singly or in an array to attain required gain or beam width.

Wireless

WADE Antenna offers a variety of solutions for wireless antennas. These applications include mining, trains and multi-point network base stations. In addition, WADE Antenna has accessories, power dividers, lightning arrestors, and cabling.

Mining

Train

Base Station

Point to Point

Visit Wade's new website at
wadeantenna.com

WADE Antenna Inc.
29 Sharp Road
Bramford, ON Canada N3T 3L8
sales@wadeantenna.com

Toll Free: (800) 463-1607
Tel: (519) 736-7157
Fax: (519) 736-5026

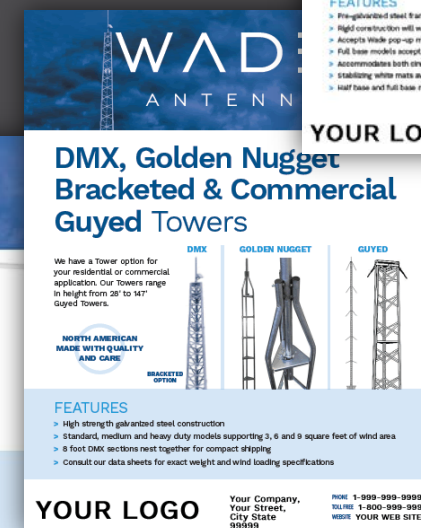
Canadian & U.S. Sales
Doreen Robyn
doreen@wadeantenna.com
Shane Heringer
shane@wadeantenna.com

U.S. Distributor Development
BBS Barter
bbbarter@wadeantenna.com
Shane Heringer
shane@wadeantenna.com

Product Featured Email Blasts

All customized with your company logo and contact information

- Promotional video announcements
- Installation video links
- Features, benefits and applications
- Promotions tailored to your organization
- Products of your choosing



Special Offer Email Blasts

- Customized with your logo and company information
- Focus on products of your choosing
- Great way to inform your customers
- Monthly promotional offers
- Newsletter utilization

We're Going Above and Beyond!

Wade Towers and Antennas always brings you the best price, unrivalled quality and outstanding service and support. For the Canadian Wireless Show, Wade and TDL are going above and beyond to offer you 10% off these towers and mounts!

Orders must be placed on or before November 1, 2016.

Non-Penetrating Roof Mounts
Designed for wireless Internet providers, municipalities' wireless networks, two-way radio communications, schools, and many more installations. The rigid construction of the pre-galvanized steel frame means they last longer and withstand even the harshest weather. The frame of the NPRM accommodates both cinder blocks and patio stones, so your antenna stays secured without the need of anchoring the mount to the roof surface.

DMX Towers
Designed for video surveillance systems, amateur radio, SCADA, wireless and rural broadband Internet access, as well as industrial/commercial communications applications. The DMXDMXHD tower ships complete with concrete base stubs, top plate, rotor plate, two model 244A cast aluminum mast clamps and all necessary hardware for easy installation. DMX self-supporting models use the "X" brace with sturdy added channel lag construction for extra stability, durability and longevity in the most adverse conditions.

Tripod and Bipod Roof Mounts
Engineered for maximum strength, stability and durability. Made with 1 1/2" (3.2 cm) galvanized welded steel tubing, with interior/exterior galvanized steel coating to prevent corrosion. These heavy-duty mounts accept up to 1 1/4" (4.4 cm) mast and feature a swing-away mast support. On-site installation is quick and easy. Wind load test results are available for TRM-3 and TRM-5.

10% OFF

10% OFF

10% OFF

Canadian Wireless TRADE SHOW VISIT TDL AT BOOTH #220 AND #518 TORONTO CONGRESS CENTRE / OCTOBER 26-27, 2016

WAD E
ANTENNA
wadeantenna.com

DISTRIBUTED BY
YOUR LOGO TOLL FREE ORDER LINE 1-999-999-9999
EMAIL john@youremail.com
WEBSITE YOUR WEB SITE

WAD E
ANTENNA

FEBRUARY SPECIAL OFFER!

The more you buy, the more you'll save!

Place a \$5,000 order and receive a 5% discount
Place a \$10,000 order and receive a 7% discount
Place a \$15,000 order and receive an 8% discount

VALID NOW THROUGH FEBRUARY 28TH

Buy Ten Wade DMX Towers and Get One FREE!

For every ten Wade DMX towers you buy, we will ship you another one FREE of charge. It's a limited time offer, so contact Debbie today to order!

WADE HELPS YOU REACH HIGHER!

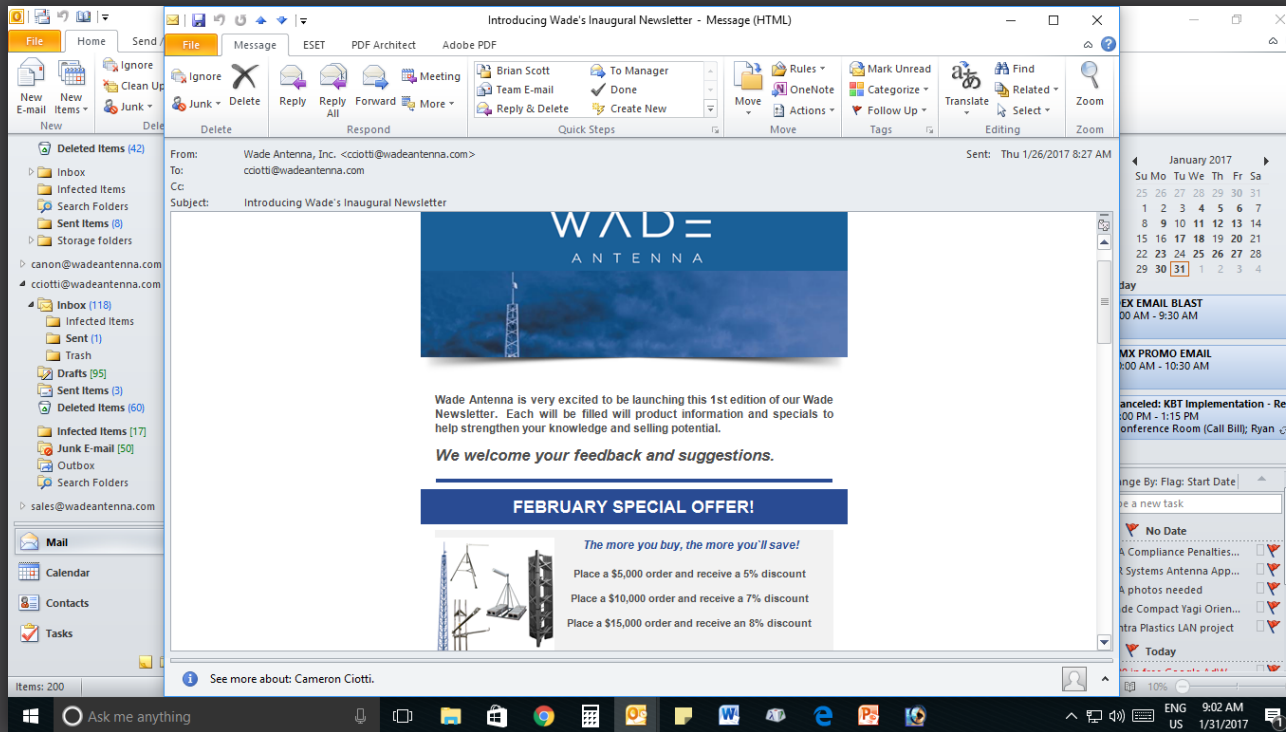
WAD E
ANTENNA
wadeantenna.com

WADE Antenna Inc.
Debbie Robyn / Canadian and US Sales
Email: drobyn@wadeantenna.com
Tel: (519) 756-5056 / Toll Free: (800) 463-1607

OFFER EXPIRES NOVEMBER 30 2016

Newsletter Promotion

- Utilize our quarterly newsletter to promote Wade to your customers
- Each edition features a different product and special offer
- We welcome your suggestions for items to include





Wade Antenna is very excited to be launching this 1st edition of our Wade Newsletter. Each will be filled with product information and specials to help strengthen your knowledge and selling potential.

We welcome your feedback and suggestions.

FEBRUARY SPECIAL OFFER!

The more you buy, the more you'll save!

- Place a \$5,000 order and receive a 5% discount
- Place a \$10,000 order and receive a 7% discount
- Place a \$15,000 order and receive an 8% discount

VALID NOW THROUGH FEBRUARY 28TH

POINT-OF-PURCHASE DISPLAY OFFER

In an effort to jump start the new year and help you promote our products, Wade is offering to all of our distributors a Point-of-Purchase display.

It's a 6 foot DMX section with (3) 8.5"x14" promotional signs featuring our Towers, NPRMs and Tripods. It will include a stabilizing base for safe use in your display room or atrium shows.

*Available Mid February.
Please contact Debbie Robyn: 519.756.7157 ext. 247

[Email Debbie](#)



LOOKING FOR MORE STRENGTH AND STABILITY?

INTRODUCING THE DMX-68AN

The new and improved DMX-68AN is our latest option for those looking for an even more robust 68 foot tower. We have replaced the standard TMCA mast clamps with our heavy duty 244A clamps to accommodate up to a 25" mast. The package remains the same in all other respects: CBS concrete base stubs, top plate, rotor plate, and all necessary hardware.

Contact us today for further details.

MEET THE NON-PENETRATING ROOF MOUNT DESIGNED FOR INDUSTRIAL APPLICATIONS!

Our heaviest-duty non-penetrating roof mount conforms to CS standard G40.21. It's ruggedly constructed, flexible and adaptable, and easy to install. It uses standard pallets, and with 4 available mast sizes and configurations, the



CONTACT US TODAY

Phone: (519) 756.7157
Toll Free: (800) 483.1607
Fax: (519) 756.5056

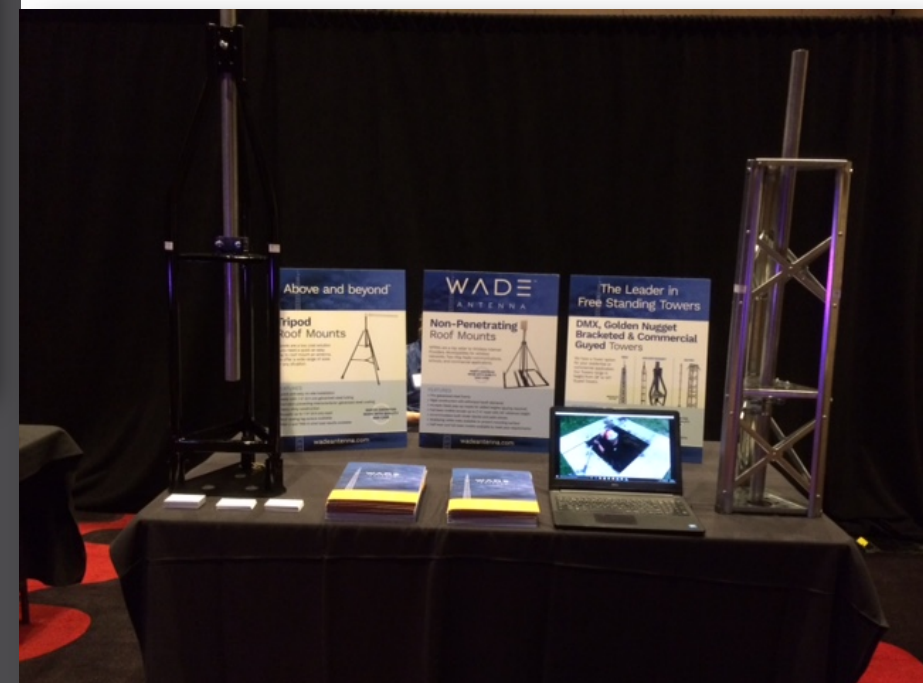
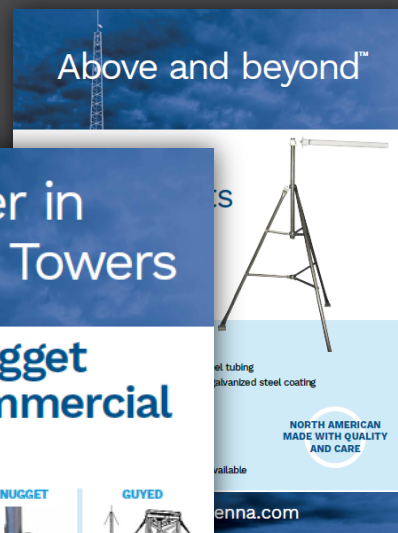
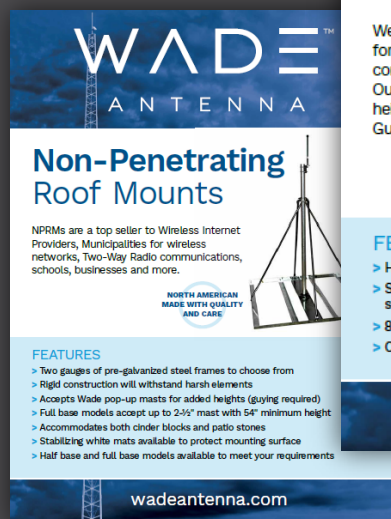
[Email](#)

Going Above and Beyond

[Visit our website](#)

Supplier Events

- Trade show support
- Literature
- Tower section
- PowerPoint presentations
- Product Videos



Incentives

Scratch & Win



scratch
to
win!

300 great prizes
to be won, including
**gifts and
big discounts!**

WADE
ANTENNA

**YOUR
LOGO**

together
we take you higher!

WADE
ANTENNA

Sales Contests



Picture This.

Great summer holidays create picture perfect memories. You won't miss a moment with these amazing cameras!

Make it happen with Wade Antennas.

Wade Antenna Summer Promo / July 1st to August 31, 2016

Any purchase order placed between July 1 and August 31 that meets or exceeds the following purchase levels is eligible for a camera. It's a perfect incentive to fire up your sales team this summer: the sales person that sells the most Wade product during the promotion is awarded with one of these great cameras!

\$30,000* LEVEL

DJI Phantom Quadcopter Drone with Camera and Controller – Ready-to-Fly!

Ready for the ultimate your photos and videos to new heights? Safe, easy, and fun to fly, you'll get your own perspective on the world as you capture moments in an unforgettable way. With its HD camera, built-in GPS, and a whole lot more!

\$20,000* LEVEL

GoPro HERO3 White Bundle – Be Prepared and Connected!

Capture all the action as your underwater adventures and mountain escapades. Stay the HERO3 with your helmet, headlamps, or gear to record footage of your holiday adventures in full HD video or take 10MP photos. With built-in Wi-Fi, you can preview videos on your smartphone or tablet through the GoPro app.

WADE
ANTENNA
wadeantenna.com



Picture This.

Great summer holidays create picture perfect memories. You won't miss a moment with these amazing cameras!

Make it happen with Wade Antennas.

Wade Antenna Summer Promo / July 1st to August 31, 2016

Any purchase order placed between July 1 and August 31 that meets or exceeds the following purchase levels is eligible for a camera. It's a perfect incentive to fire up your sales team this summer: the sales person that sells the most Wade product during the promotion is awarded with one of these great cameras!

\$30,000* LEVEL

DJI Phantom Quadcopter Drone with Camera and Controller – Ready-to-Fly!

Ready for the ultimate your photos and videos to new heights? Safe, easy, and fun to fly, it gives you a new perspective on the world as you capture moments in an unforgettable way. With its HD camera, built-in GPS, and a whole lot more!

\$20,000* LEVEL

GoPro HERO3 White Bundle – Be Prepared and Connected!

Capture all the action as your underwater adventures and mountain escapades. Stay the HERO3 with your helmet, headlamps, or gear to record footage of your holiday adventures in full HD video or take 10MP photos. With built-in Wi-Fi, you can preview videos on your smartphone or tablet through the GoPro app.

\$10,000* LEVEL

Fujifilm Instax Mini 90 Camera Kit – Don't Miss a Moment!

Capturing those fun and precious moments is a snap. Instant, 844 pictures: come out of the auto flash built-in focus feature and the brightness adjustment dial that gives you the best results, even in low lighting. The electronic shutter ensures you won't miss a single memorable moment!

HAPPY SELLING AND HAVE A GREAT SUMMER!

WADE
ANTENNA
wadeantenna.com

25 Sharp Road, Brampton, Ontario, Canada N5T 5L5
TOLL FREE: 1-800-462-3887 LOCAL: (905) 756-7187
F: (905) 756-4800 F: (519) 756-5854



Picture This.

Great summer holidays create picture perfect memories. You won't miss a moment with these amazing cameras!

Make it happen with Wade Antennas.

Wade Antenna Summer Promo / July 1st to August 31, 2016

Any purchase order placed between July 1 and August 31 that meets or exceeds the following purchase levels is eligible for a camera. It's a perfect incentive to fire up your sales team this summer: the sales person that sells the most Wade product during the promotion is awarded with one of these great cameras!

\$30,000* LEVEL

DJI Phantom Quadcopter Drone with Camera and Controller – Ready-to-Fly!

Ready for the ultimate your photos and videos to new heights? Safe, easy, and fun to fly, it gives you a new perspective on the world as you capture moments in an unforgettable way. With its HD camera, built-in GPS, and a whole lot more!

\$20,000* LEVEL

GoPro HERO3 White Bundle – Be Prepared and Connected!

Capture all the action as your underwater adventures and mountain escapades. Stay the HERO3 with your helmet, headlamps, or gear to record footage of your holiday adventures in full HD video or take 10MP photos. With built-in Wi-Fi, you can preview videos on your smartphone or tablet through the GoPro app.

\$10,000* LEVEL

Fujifilm Instax Mini 90 Camera Kit – Don't Miss a Moment!

Capturing those fun and precious moments is a snap. Instant, 844 pictures: come out of the auto flash built-in focus feature and the brightness adjustment dial that gives you the best results, even in low lighting. The electronic shutter ensures you won't miss a single memorable moment!

HAPPY SELLING AND HAVE A GREAT SUMMER!

WADE
ANTENNA
wadeantenna.com

25 Sharp Road, Brampton, Ontario, Canada N5T 5L5
TOLL FREE: 1-800-462-3887 LOCAL: (905) 756-7187
F: (905) 756-4800 F: (519) 756-5854

Above and beyond.™

Point-of-Purchase Displays

FRONT DESK DISPLAY

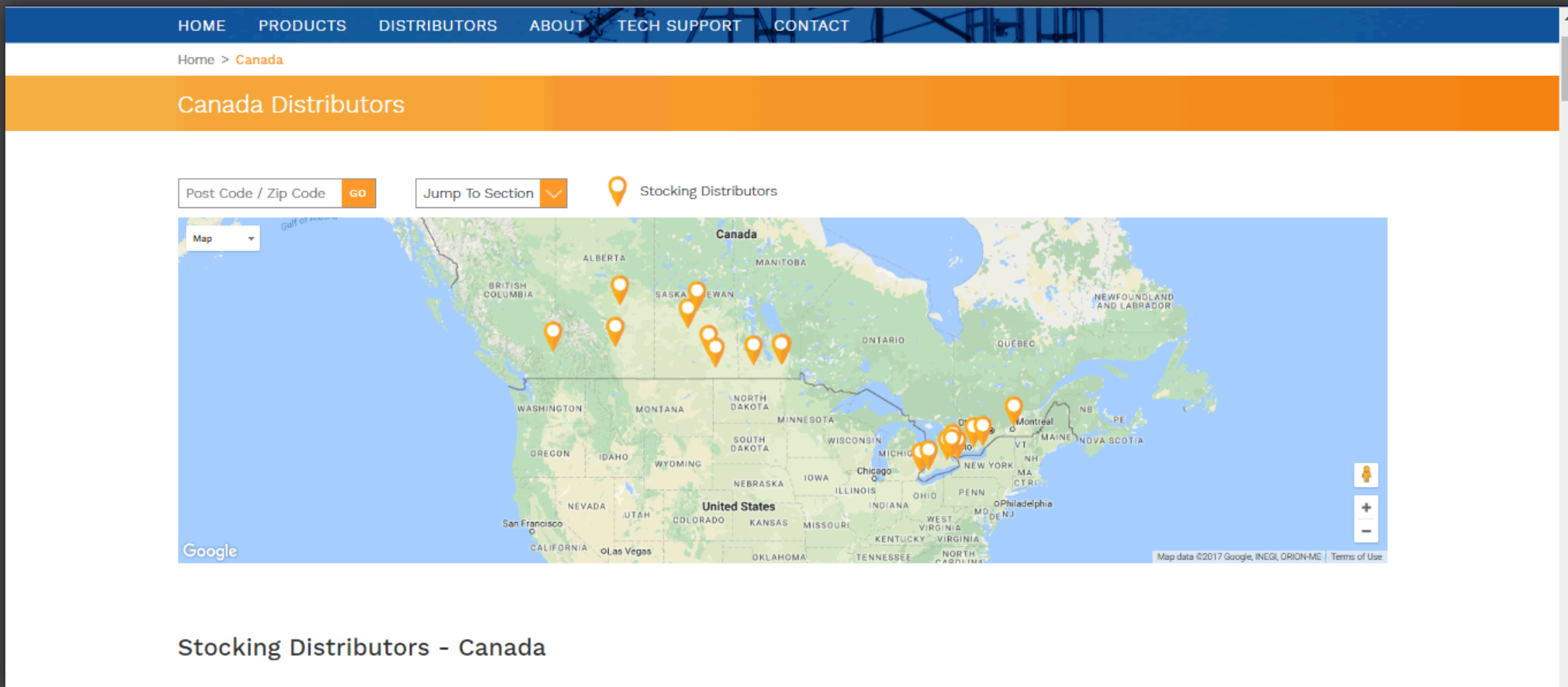


DMX DISPLAY

- 6 Foot DMX section
- (3) 8.5"x 14" promotional signs featuring our Towers, NPRMs and Tripods
- Stabilizing base
- Perfect for show rooms and trade shows



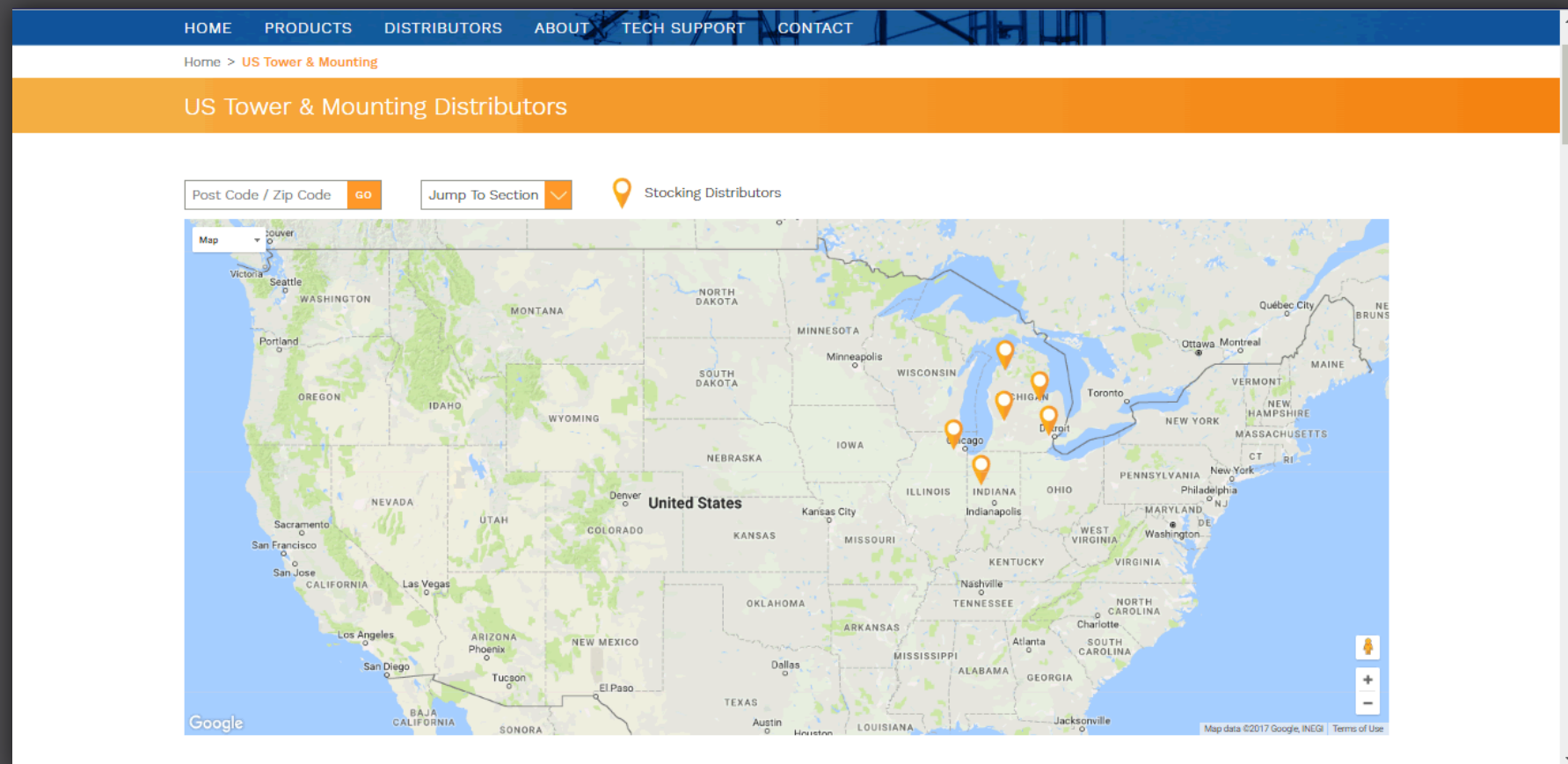
Canadian Distributor Map



- Screenshot of our current Canadian stocking distributor network.

US Distributor Map

- Screenshot of our current US stocking distributor network
- We are dedicated to your success in new markets



QUESTIONS?